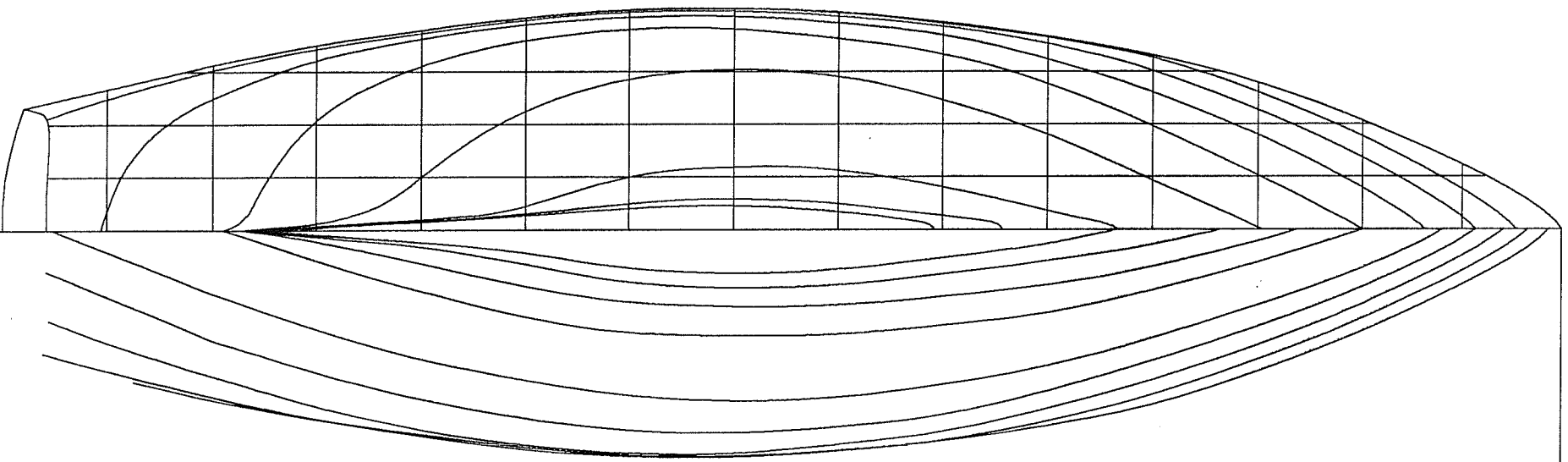
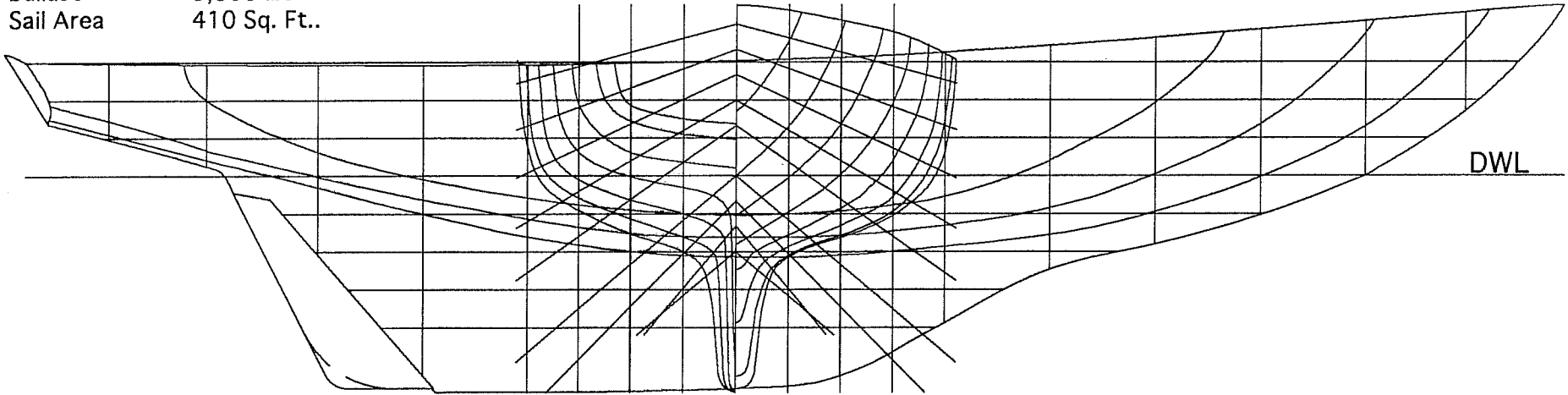


LOA 30' 3"  
 LWL 21' 8"  
 Beam Max 8' 9"  
 BWL 7' 11-3/4"  
 Draft 4' 3"  
 Displacement 8,752 lbs.  
 Ballast 3,300 lbs  
 Sail Area 410 Sq. Ft..

# A-30

Prismatic Coefficient .52  
 Displacement Length Ratio 395/384  
 Sail Area Displacement Ratio 15.2/15.4  
 Beam Length Ratio .29  
 Ballast Displacement Ratio .37/.38  
 Comfort Ratio 32/31



Pounds per 1" of Immersion 676 lbs.  
 Moment to Change Trim 1" 775 lbs  
 Righting Moment @ 1deg. 405 lbs.  
 Wetted Surface Area 204 Sq. Ft.

